

Thermo Nova *Reflective Film*



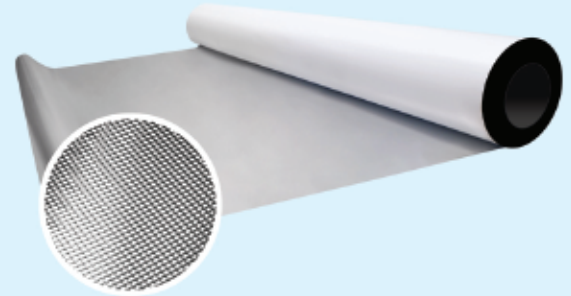
Benefits of Thermo Nova

Thermo Nova is a top quality highly reflective film that uses a diamond pattern to reflect light on one side and block 100% light penetration on the other. The pattern allows light to spread evenly with no hotspots.

This triple ply extrusion is completely light proof, water tight and PET coated to protect against corrosion and creasing. Ideal for grow rooms and greenhouses.

Sizes Available

Size
4' X 50' 4' X 100'



ThermoFlo Technologies guarantees that Thermo Nova will be free from any manufacturing defects including bubbling and separating as long as the installation of the product is in a manner consistent with ThermoFlo Technologies installation guidelines.

For more information

1.866.321.1020
www.thermoflotech.com

Proud to be associated with



Canadian
Manufacturers &
Exporters
British Columbia Division

